



# SEPAHAN FOOLAD ATASHGAH

## CASTING INDUSTRIES







## **Quality Policy of Sepahan Foolad Atashgah Casting Industries Co.**

### **Promoting the culture of continuous improvement and increasing customer satisfaction:**

Institutionalizing the culture of continuous improvement and ensuring efforts at all levels of the organization are focused on meeting the specific requirements of customers and adhering to the standards: ISO 9001:2015, ISO 14001, ISO 10004, CE, MS, OHSAS 18001.

### **Efforts to increase market share:**

Development of a marketing network and maintaining continuous communication with potential and existing customers, and the production of high-quality and reasonably priced products.

### **Improving the state of production infrastructure:**

Using the latest available technology, equipment, and technical knowledge, along with establishing a research and development unit to improve the quality of products, achieve zero waste, and increase productivity.

### **Enhancing on-time delivery performance:**

Minimizing deviations from the production schedule and expanding the supply network for raw materials and supplier services.

### **Improving human resources management:**

Implementing effective training programs to enhance the knowledge and skill levels of employees, as well as ensuring their safety and health across all levels of the organization, while utilizing appropriate motivational systems to foster creativity and responsibility.

### **Reducing environmental pollution and securing the work environment:**

Identifying, controlling, and reducing risks and harmful factors in the work environment, while improving the health and safety of human resources.





## SEPAHAN FOOLAD ATASHGAH

### Introduction of Sepahan Foolad Atashgah Casting Industries Co.

Sepahan Foolad Atashgah Casting Industries Company was established in 2016 with the purpose of casting all kinds of steels and cast irons as a speciality. With more than three decades of continuous activity, it is now considered one of the top casting companies.

Sepahan Foolad Atashgah Casting Industries Company has 10 furnaces with a total melting capacity of 20,000 kg within a space of 25,000 square meters and has an annual production capacity of 25,000 tons of casting.

In order to continuously improve the quality of products, the company has used specialized experts, young personnel, modern equipment, and technical knowledge, and has been able to cooperate with many reputable domestic and foreign companies in the field of producing various industrial parts, including those used in mining, steel, cement, and copper.

Sepahan Foolad Atashgah Casting Industries Company is committed to a bright and successful future by relying on its capabilities, with the support of organizational wealth and the strategic approach of management to maintain and develop these competencies.





One of the key products manufactured by the company is grinding balls, which are used in ball mills. These grinding balls, produced through casting methods, are available in various sizes and chemical compositions to meet the needs of different industries such as cement, steel, industrial concentrates, aerated concrete (AAC), industrial powders, and more.

A key feature of the cast grinding balls produced by the company is their high wear resistance, as well as their durability against breakage and deformation, while maintaining their spherical shape during the grinding process.

Another important characteristic of these grinding balls is their low wear rate, which determines their consumption speed in various processes. This feature helps reduce production costs and enhances customer productivity.

The company employs modern casting techniques, heat treatments, and mechanical hardness improvements to continually reduce wear rates and optimize the cost-effectiveness of the production processes for its customers.

The company produces these components in spherical shapes (in sizes ranging from 15 mm, 17.5 mm, 20 mm, 25 mm, 30 mm, 35 mm, 40 mm, 50 mm, 60 mm, 70 mm, 80 mm, 90 mm, 100 mm, to 125 mm) and cylindrical shapes (in sizes 12x12 mm, 16x16 mm, 19x19 mm, 22x22 mm, 25x25 mm, and 30x30 mm). These parts are mainly manufactured based on the standard analyses listed in the table below, or other analyses and requirements requested by the customer.

Numbers	C%	Si%	Mn%	Cr%	Ni%	Max P%	Max S%	Hardness HRC
No.1	2.9-3.5	0.4-1.0	0.3-0.7	10-12	0.5≥	0.05	0.08	58-66
No.2	2.5-3.3	0.5-1.0	0.3-0.7	11-14	0.5≥	0.05	0.08	58-64
No.3	1.8-2.6	0.5-1.1	0.3-0.7	15-17	0.5≥	0.05	0.08	58-62
No.4	2.0-2.8	0.5-1.0	0.3-0.7	29-31	0.5≥	0.05	0.08	58-64
No.5	3.0-3.8	0.5-1.0	0.3-0.7	Max 2.5	0.5≥	0.05	0.1	56-60





[WWW.SFA-FOUNDRY.COM](http://WWW.SFA-FOUNDRY.COM)



**SEPAHAN FOOLAD ATASHGAH**



# Mining Industry



**Outer Feed Head Liner**

■ 1200 kg



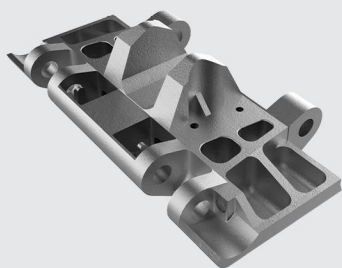
**Shell Liner**

■ 900 kg



**Outer Grate**

■ 1000 kg



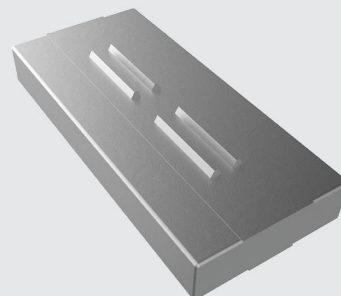
**Track Shoes**

■ 400 kg



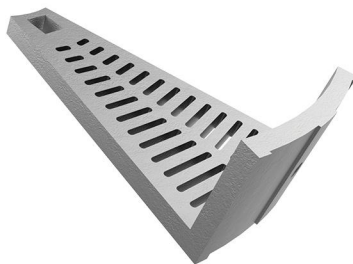
**Lisa Discharger**

■ 1200 kg



**Impact Wall Hammer**

■ 700 kg



**Inner Diaphragm**

■ 750 kg



**Grate Plate**

■ 180 kg



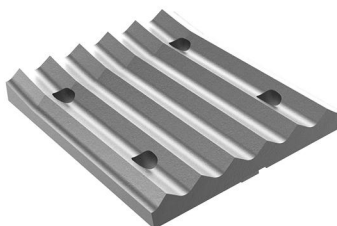
**Gear Kiln Nose Casting**

■ 750 kg



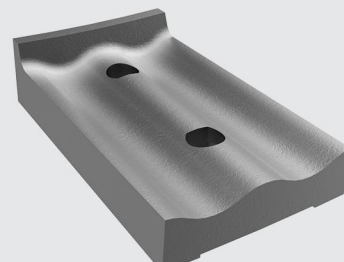
**Mantle**

■ 3500 kg



**Crusher Jaw Plate**

■ 3000 kg

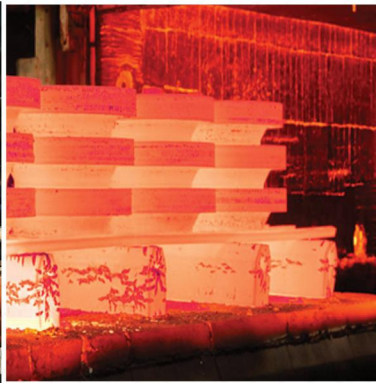


**Liner Plate**

■ 90 kg

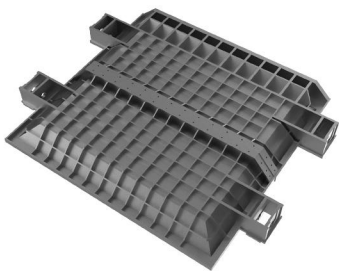


# SEPAHAN FOOLAD ATASHGAH CASTING INDUSTRIES





# Copper Industry



**Movable Hood**

■ 10000 kg



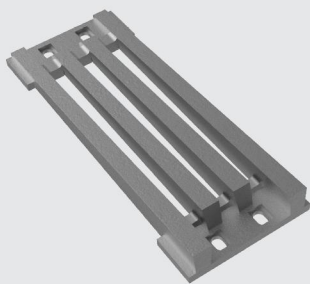
**Bearing Housing(HM600)**

■ 1400 kg



**Cover Pulper Discharger**

■ 1200 kg



**Sieve Plate**

■ 60 kg



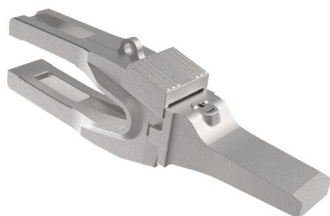
**Crusher Mantle**

■ 2300 kg



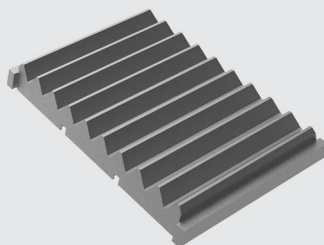
**Mill Segment**

■ 350 kg



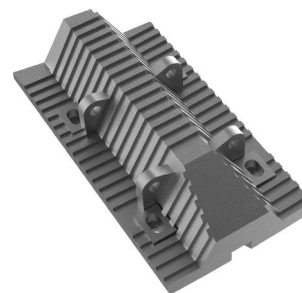
**Bucket Teeth & Adapter**

■ 400 kg



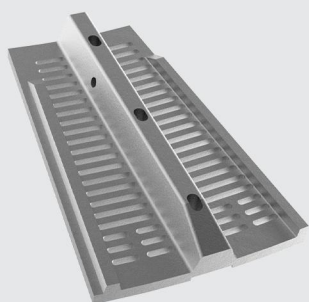
**Jaw Crusher**

■ 1700 kg



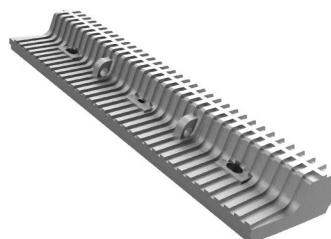
**Middle Shell Liner**

■ 1350 kg



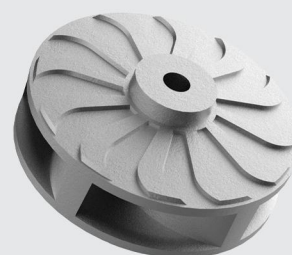
**Discharge Grate**

■ 1250 kg



**SAG Mill Shell Liner**

■ 1100 kg



**Slurry Pump Impeller**

■ 2200 kg

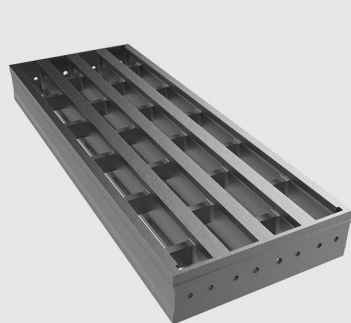


# Steel Industry



**Convactor**

■ 1100 kg



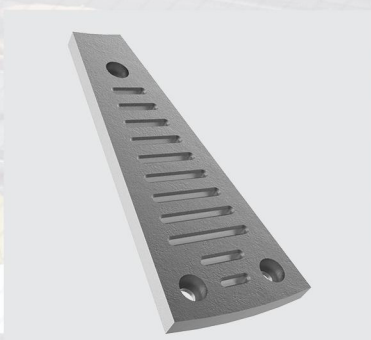
**Center Part**

■ 5300 kg



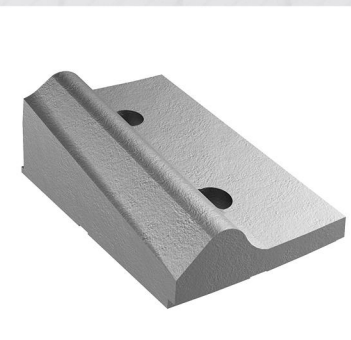
**End Casting**

■ 700 kg



**Slotted Plate**

■ 180 kg



**Sorting Liner Plate**

■ 90 kg



**Grate Plate**

■ 22 kg



**Chain Link**

■ 34 kg



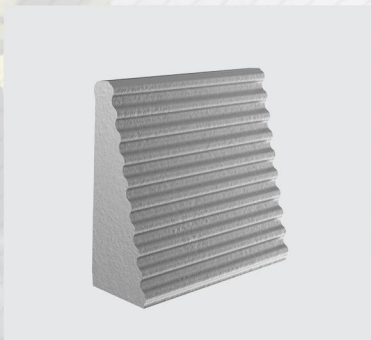
**Side Plate**

■ 20 kg



**Grate Bar**

■ 4.3 kg



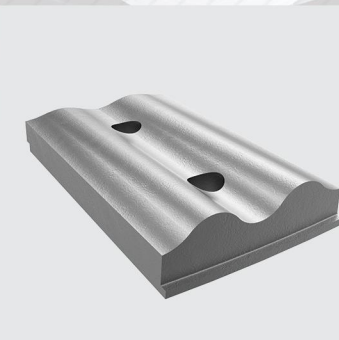
**Upper Side Wall**

■ 9.5 kg



**Lower Side Wall**

■ 27 kg



**Wave Liner Plate**

■ 85 kg







# Cement Industry



**Roller Gear**

■ 1100 kg



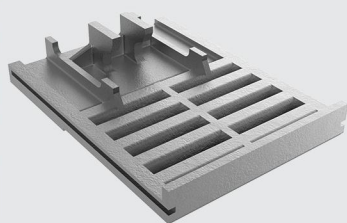
**Roller Body**

■ 5300 kg



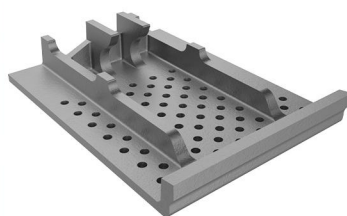
**Blow Bar**

■ 1250 kg



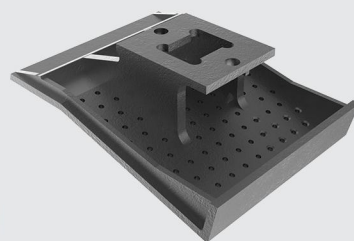
**Cooler Grate Plate**

■ 26 kg



**Cooler Grate Plate(Circle Hole)**

■ 19 kg



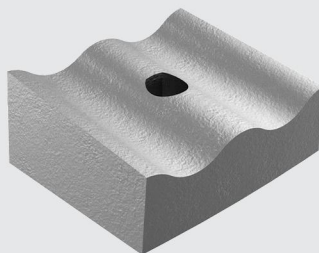
**Cooler Grate Plate(Sector)**

■ 58 kg



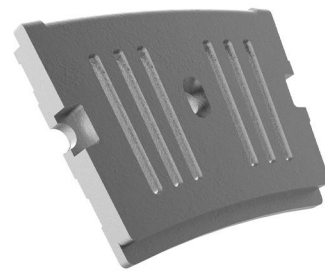
**Hammer**

■ 135 kg



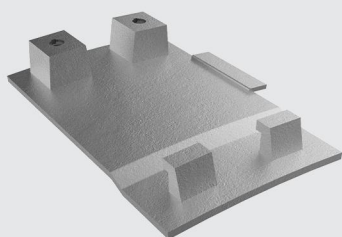
**Mill Shell Liner**

■ 60 kg



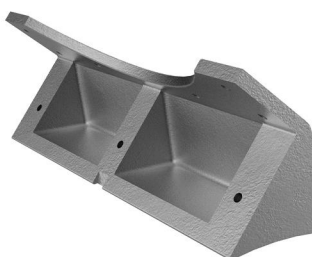
**Mill Diaphragm Liner**

■ 45 kg



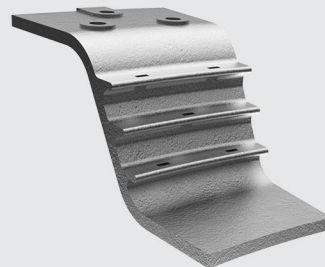
**Immersion Tube Segment**

■ 43 kg



**Sealing Segment**

■ 250 kg



**Rotary Kiln Inlet Sector**

■ 90 kg



## SEPAHAN FOOLAD ATASHGAH CASTING INDUSTRIES



📍 No.1 - 28th Sub Corner Sornar – Dr.Hesabi Blvd. – Sanaat Sqr.  
– Najaf Abad Industries Park 2 – Najaf Abad – Esfahan - Iran  
☎️ +983142696500-4 🖨️ +9831426965 05 📠 8585167661

🌐 [www.sfa-foundry.com](http://www.sfa-foundry.com)

Export Department: [export@sfa-foundry.com](mailto:export@sfa-foundry.com)

+971-525122437 +971-58 8212580