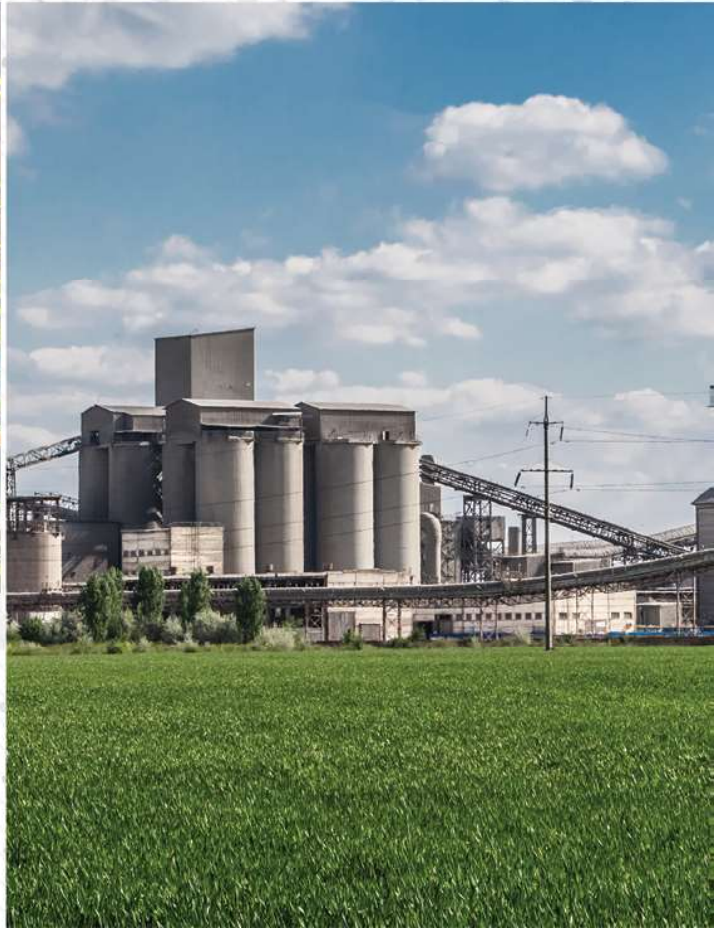




SEPAHAN FOOLAD ATASHGAH

CASTING INDUSTRIES





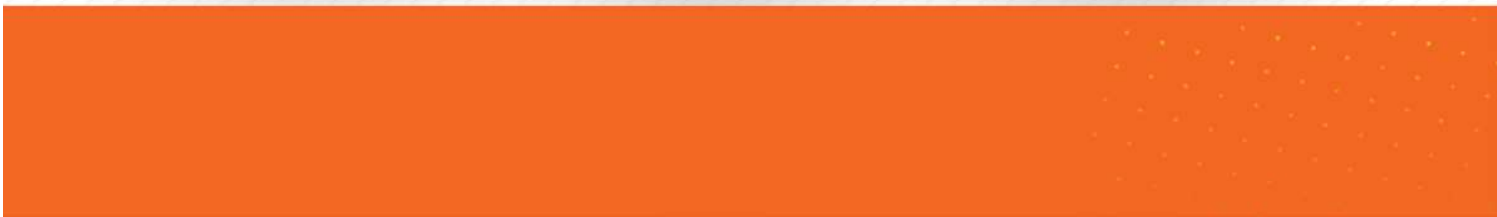
SEPAHAN FOOLAD ATASHGAH

CASTING INDUSTRIES





WWW.SFA-FOUNDRY.COM





Quality Policy of Sepahan Foolad Atashgah Casting Industries Co.

Promoting the culture of continuous improvement and increasing customer satisfaction:

Institutionalizing the culture of continuous improvement and ensuring efforts at all levels of the organization are focused on meeting the specific requirements of customers and adhering to the standards: ISO 9001:2015, ISO 14001, ISO 10004, CE, MS, OHSAS 18001.

Efforts to increase market share:

Development of a marketing network and maintaining continuous communication with potential and existing customers, and the production of high-quality and reasonably priced products.

Improving the state of production infrastructure:

Using the latest available technology, equipment, and technical knowledge, along with establishing a research and development unit to improve the quality of products, achieve zero waste, and increase productivity.

Enhancing on-time delivery performance:

Minimizing deviations from the production schedule and expanding the supply network for raw materials and supplier services.

Improving human resources management:

Implementing effective training programs to enhance the knowledge and skill levels of employees, as well as ensuring their safety and health across all levels of the organization, while utilizing appropriate motivational systems to foster creativity and responsibility.

Reducing environmental pollution and securing the work environment:

Identifying, controlling, and reducing risks and harmful factors in the work environment, while improving the health and safety of human resources.



SEPAHAN FOOLAD ATASHGAH

Introduction of Sepahan Foolad Atashgah Casting Industries Co.

Sepahan Foolad Atashgah Casting Industries Company was established in 2016 with the purpose of casting all kinds of steels and cast irons as a speciality. With more than three decades of continuous activity, it is now considered one of the top casting companies.

Sepahan Foolad Atashgah Casting Industries Company has seven furnaces with a total melting capacity of 20,000 kg within a space of 25,000 square meters and has an annual production capacity of 25,000 tons of casting.

In order to continuously improve the quality of products, the company has used specialized experts, young personnel, modern equipment, and technical knowledge, and has been able to cooperate with many reputable domestic and foreign companies in the field of producing various industrial parts, including those used in mining, steel, cement, and copper.

Sepahan Foolad Atashgah Casting Industries Company is committed to a bright and successful future by relying on its capabilities, with the support of organizational wealth and the strategic approach of management to maintain and develop these competencies.

Mining Industry



Outer Feed Head Liner

■ 1200 kg



Shell Liner

■ 900 kg



Outer Grate

■ 1000 kg



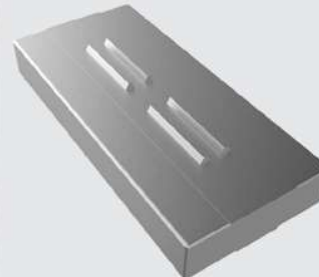
Track Shoes

■ 400 kg



Lisa Discharger

■ 1200 kg



Impact Wall Hammer

■ 700 kg



Inner Diaphragm

■ 750 kg



Grate Plate

■ 180 kg



Gear Kiln Nose Casting

■ 750 kg



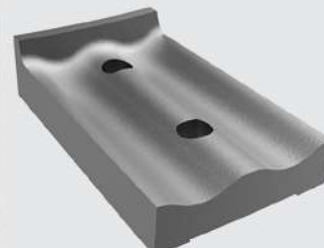
Mantle

■ 3500 kg



Crusher Jaw Plate

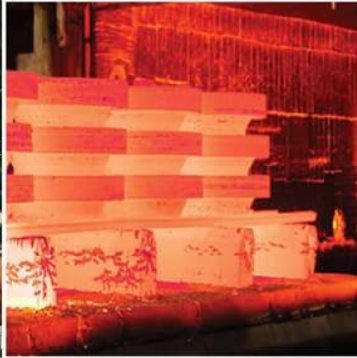
■ 3000 kg



Liner Plate

■ 90 kg

SEPAHAN FOOLAD ATASHGAH CASTING INDUSTRIES



Copper Industry



Movable Hood

■ 10000 kg



Bearing Housing(HM600)

■ 1400 kg



Cover Pulper Discharger

■ 1200 kg



Sieve Plate

■ 60 kg



Crusher Mantle

■ 2300 kg



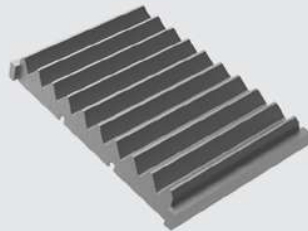
Mill Segment

■ 350 kg



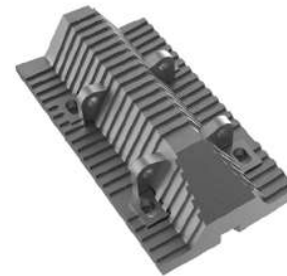
Bucket Teeth & Adapter

■ 400 kg



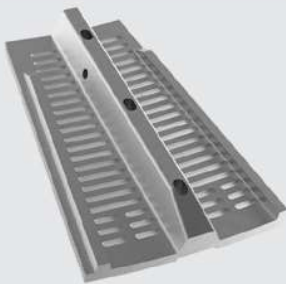
Jaw Crusher

■ 1700 kg



Middle Shell Liner

■ 1350 kg



Discharge Grate

■ 1250 kg



SAG Mill Shell Liner

■ 1100 kg



Slurry Pump Impeller

■ 2200 kg

Steel Industry



Convector

■ 1100 kg



Center Part

■ 5300 kg



End Casting

■ 700 kg



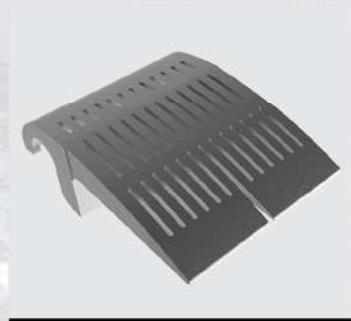
Slotted Plate

■ 180 kg



Sorting Liner Plate

■ 90 kg



Grate Plate

■ 22 kg



Chain Link

■ 34 kg



Side Plate

■ 20 kg



Grate Bar

■ 4.3 kg



Upper Side Wall

■ 9.5 kg



Lower Side Wall

■ 27 kg



Wave Liner Plate

■ 85 kg



Cement Industry



Roller Gear

■ 1100 kg



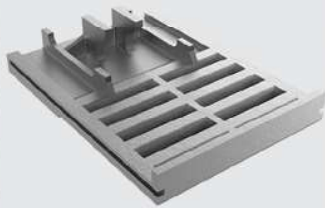
Roller Body

■ 5300 kg



Blow Bar

■ 1250 kg



Cooler Grate Plate

■ 26 kg



Cooler Grate Plate(Circle Hole)

■ 19 kg



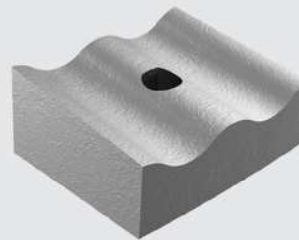
Cooler Grate Plate(Sector)

■ 58 kg



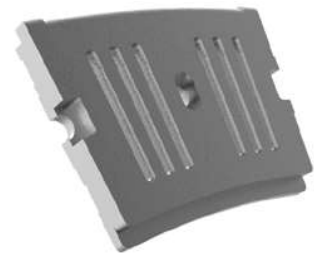
Hammer

■ 135 kg



Mill Shell Liner

■ 60 kg



Mill Diaphragm Liner

■ 45 kg



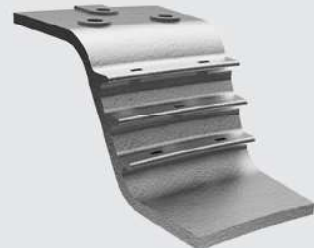
Immersion Tube Segment

■ 43 kg



Sealing Segment

■ 250 kg



Rotary Kiln Inlet Sector

■ 90 kg

SEPAHAN FOOLAD ATASHGAH CASTING INDUSTRIES



📍 No.1 - 28th Sub Corner Corner – Dr.Hesabi Blvd. – Sanaat Sq.
– Najaf Abad Industries Park 2 – Najaf Abad – Esfahan - Iran

☎ +983142696500-4 📠 +9831426965 05 📞 8585167661

✉ Sfa.sepahan@gmail.com 📧 Sfa.sepahan@yahoo.com

🌐 www.sfa-foundry.com

Export Department: exportsfa.foundry@gmail.com