



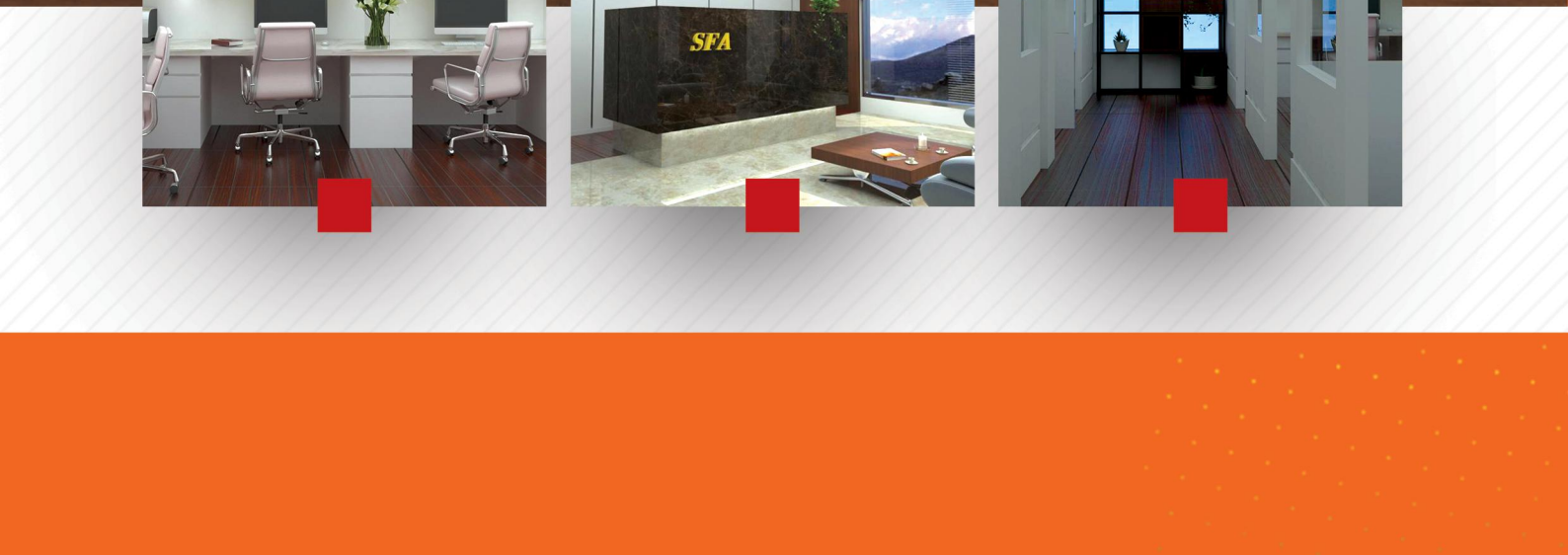
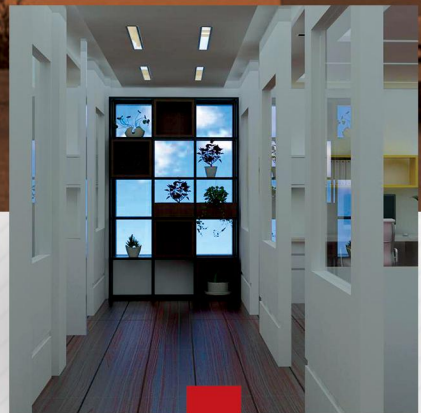
SEPAHAN FOOLAD ATASHGAH

CASTING INDUSTRIES





WWW.SFA-FOUNDRY.COM





SEPAHAN FOOLAD ATASHGAH

CASTING INDUSTRIES





SEPAHAN FOOLAD ATASHGAH

Introduction of Sepahan Foolad Atashgah Casting Industries CO.

Sepahan Foolad Atashgah Casting Industries Company was established in 2016 with the purpose of casting all kinds of steels and casting irons as a special stock, with more than three decades of continuous activity is now considered as one of the top casting companies.

Sepahan Foolad Atashgah casting industries company has 7 furnaces with a total melting of 20000 Kg. in a space of 25000 square meters and has the annual production capacity of 25000 tons of casting.

In order to continuously improve the quality of products, this company has used specialized experts , young personnels, modern equipment and technical knowledge, and has been able to cooperate with many reputable domestic and foreign companies in the field of producing various industrial parts such as mining, steel, cement and copper.

Sepahan Foolad Atashgah Casting Industries Company promises a bright and successful future by relying on its ability with the support of organizational wealth and the strategic approach of management in maintaining and developing these capabilities.



Quality Policy of Sepahan Foolad Atashgah Casting Industries CO.

Promoting the culture of continuous improvement and increasing customer satisfaction:

Institutionalizing the culture of continuous improvement and the efforts of all levels of the organization in order to meet the specific requirements of customers and meet the requirements of standards: ISO9001:2015, ISO14001, ISO10004, CE, IMS, OHSAS18001

Increasing market share efforts:

Development of marketing network and continuous communication with potential and actual customers , production of high quality and reasonable price products.

Improving the state of production infrastructure:

Using the latest available technology and equipment and technical knowledge as well as establishing a research and development unit in order to improve the quality level of products and achieve zero waste and increase productivity.

Improving the on-time delivery status:

Minimizing deviations from production, developing the supply network of raw materials and supplier services.

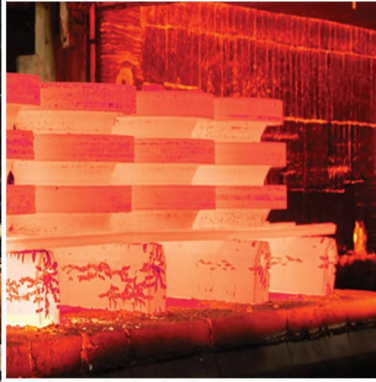
Improving the situation of human resources:

The use of effective trainings in order to improve the scientific , skill level , the safety and health of employees at all levels of the organization and the use of appropriate motivational systems in order to increase creativity and the spirit of responsibility.

Reducing environmental pollution and securing the work environment:

Identifying, controlling and reducing risks and harmful factors in the work environment and improving the health and safety of human resources.

SEPAHAN FOOLAD ATASHGAH CASTING INDUSTRIES



Mining industry



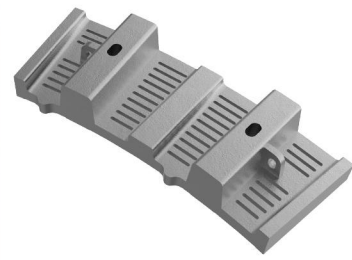
Outer Feed Haed Liner

■ 1200 kg



Shell Liner

■ 900 kg



Outer Grate

■ 1000 kg



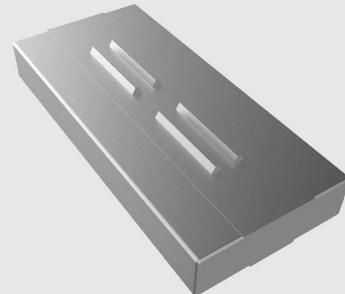
Track Shoes

■ 400 kg



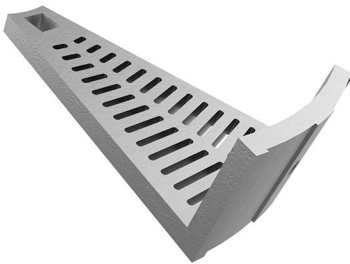
Lisa Discharger

■ 1200 kg



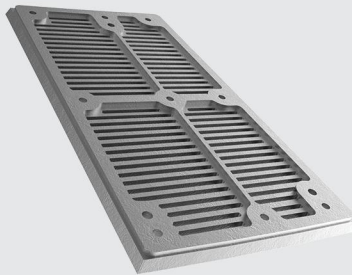
Impact Wall Hammer

■ 700 kg



Inner Diaphragm

■ 750 kg



Grate Plate

■ 180 kg



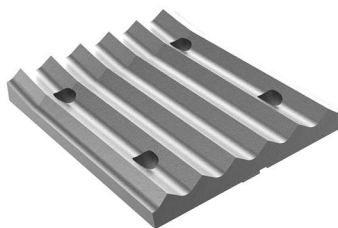
Gear Kiln Noise Casting

■ 750 kg



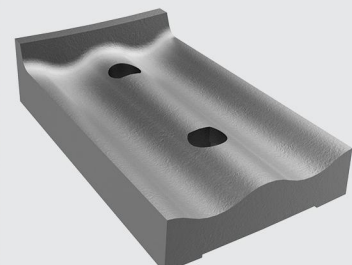
Mantle

■ 3500 kg



Crusher Jaw Plate

■ 3000 kg



Liner Plate

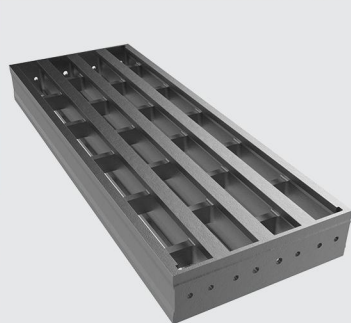
■ 90 kg

Steel industry



Convector

■ 1100 kg



Center Part

■ 5300 kg



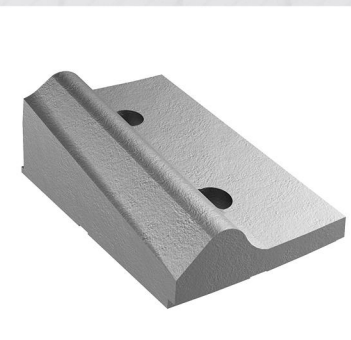
End Casting

■ 700 kg



Slotted Plate

■ 180 kg



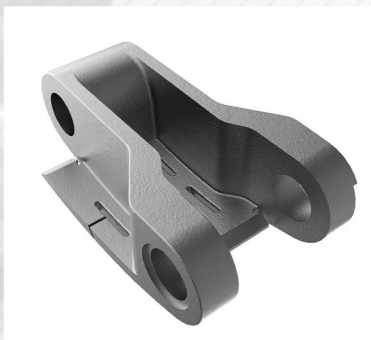
Sorting Liner Plate

■ 90 kg



Grate Plate

■ 22 kg



Chain Link

■ 34 kg



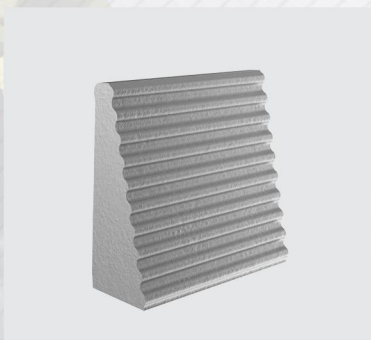
Side Plate

■ 20 kg



Grate Bar

■ 4.3 kg



Upper Side Wall

■ 9.5 kg



Lower Side Wall

■ 27 kg



Wave Liner Plate

■ 85 kg

Copper industry



Movable Hood

■ 10000 kg



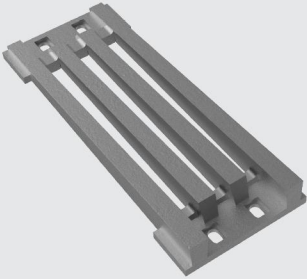
Bearing Housing(HM600)

■ 1400 kg



Cover Pulp Discharger

■ 1200 kg



Sieve Plate

■ 60 kg



Crusher Mantle

■ 2300 kg



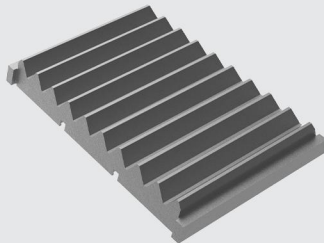
Mill Segment

■ 350 kg



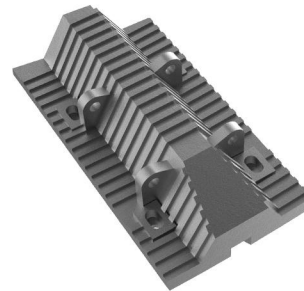
Bucket Teeth & Adapter

■ 400 kg



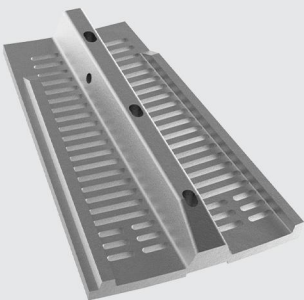
Jaw Crusher

■ 1700 kg



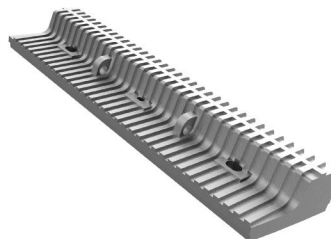
Middle Shell Liner

■ 1350 kg



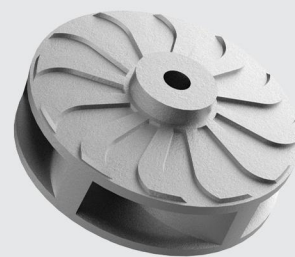
Discharge Grate

■ 1250 kg



SAG Mill Shell Liner

■ 1100 kg



Slurry Pump Impeller

■ 2200 kg

Cement industry



Roller Gear

■ 1100 kg



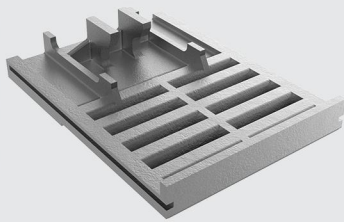
Roller Body

■ 5300 kg



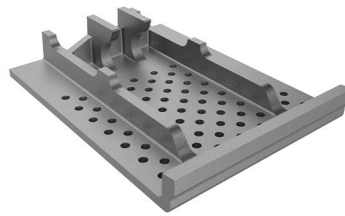
Blow Bar

■ 1250 kg



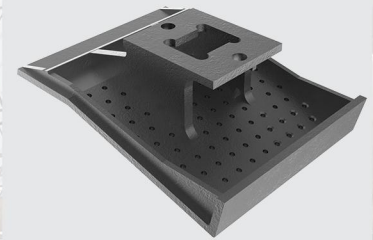
Cooler Grate Plate

■ 26 kg



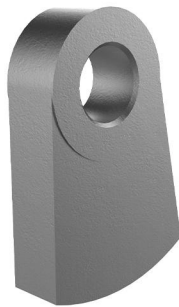
Cooler Grate Plate(Circle Hole)

■ 19 kg



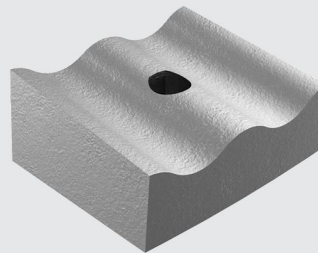
Cooler Grate Plate(Sector)

■ 58 kg



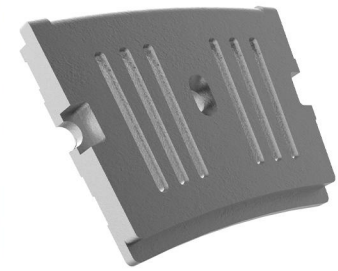
Hammer

■ 135 kg



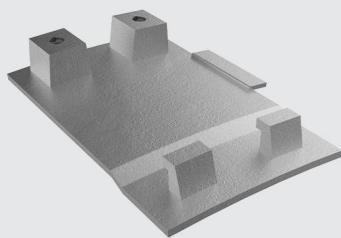
Mill Shell Liner

■ 60 kg



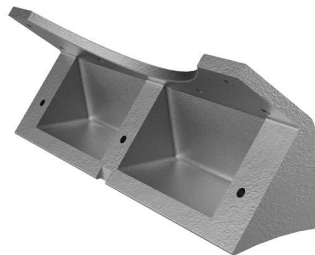
Mill Diaphragm Liner

■ 45 kg



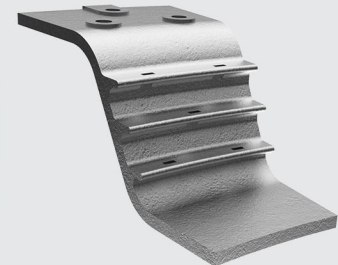
Immersion Tube Segment

■ 43 kg



Sealing Segment

■ 250 kg



Rotay Kiln Inlet Sector

■ 90 kg



SEPAHAN FOOLAD ATASHGAH CASTING INDUSTRIES



📍 No.1 - 28th Sub Corner Sornar – Dr.Hesabi Blvd. – Sanaat Sq.
– Najaf Abad Industries Park 2 – Najaf Abad – Esfahan - Iran

☎ +983142696500-4 📠 +9831426965 05 📞 8585167661

✉ Sfa.sepahan@gmail.com ✉ Sfa.sepahan@yahoo.com

🌐 www.sfa-foundry.com